

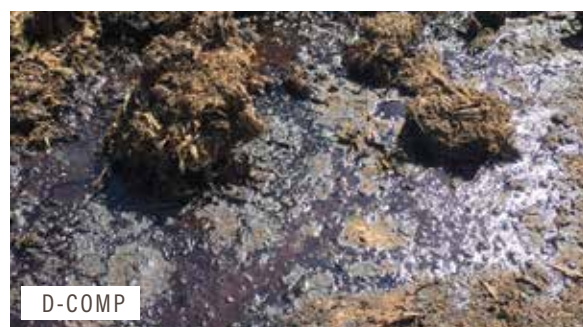


YOUR  
DECOMPOSITION  
SOLUTION



### ***What is D-COMP?***

If slow decomposition of plant or animal residue is a problem for you on your farm or ranch, D-Comp could be the answer. D-Comp is specifically designed to speed the breakdown of plant and animal residue. It even makes the composting process faster, usually without having to manually turn the pile. In fact, manure may convert to compost in 4 to 5 weeks instead of 4 to 5 months, and excess field residue may shrink more quickly. D-Comp is able to deliver these results because of its unique combination of 70 different bacteria and fungi.



D-COMP



D-COMP FUNGAL MAT

### ***As a manure additive you can look forward to:***

- Odor reduction.
- Faster composting (even in the winter!).
- Weed and bug control.
- Better handling characteristics.





**D-Comp is a combination of 70 biologicals with diverse use options.**

### **COMPONENTS**

1. BlackWater – The base of the formulation and the lifeblood of the biologicals in the formulation and the ENERGY source.
  - High density carbon – Tree based with very high (10X plus) over coal carbons.
  - Elevates the biological counts and keeps them there (unique to this product- most boost and then crash).
  - Very high affinity for stabilization of Ammonia.
2. Biologicals – 70 unique species with biodiversity.
  - Nitrogen fixers – this makes adding N to balance the C:N ratio a non-issue, which saves money.
  - Organic decomposers that break down lignin and cellulose.
  - Enzyme production.

### **BENEFITS FOR USERS:**

1. As a manure additive:
  - Odor reduction – holds ammonia and sulfur in the manure.
  - Speeds the composting process even in the winter months.
  - Elevates the temperature to kill weed seeds and insects.
  - Lowers moisture content and improves handling characteristics.
2. As a residue control product after crop:
  - Increases the biological activity in the soil.
  - Nitrogen fixers help balance the C:N ratio speeding decay.
  - Residue reduction in field and conversion to organic matter.
  - Increased soil quality and health.
  - Easy fungicide mixing.

**As a residue control product after crops you can expect:**

- Increased biological activity.
- Balanced calcium to nitrogen ratio.
- Reduced field residue.
- More organic matter conversion.
- Better soil health.
- Easy fungicide mixing.



### **APPLICATION GUIDELINES:**

*1. Use 1 quart/acre in residue situations like corn fields with enough water to cover the crop.*

- Safe for in-furrow, pre and post crop broadcast for residue control.
- Place 1 lb/acre of a sugar source for best response.

*2. Use 1 quart per 7 tons of cattle manure.*

Adjust rate up in high residue manures. Watch water percentage as biologicals in formulation are soil microbes and prefer 40% moisture or less. If manure is high moisture the recommendation is to use the Naturals SPECTRUM.



heftyseed@heftyseed.com



heftyseed.com/naturals



(800) 274-3389