



HEFTY BRAND SEED

HEFTY BRAND SEED - CORN HARVEST REPORT

Plot Name	Watertown, SD Corn Plot 2021	Dry Cost	\$0.03
City Closest to Plot	Watertown	Hefty Location	Watertown, SD
State	SD	Date Harvested	11/5/2021
Date Planted	5/11/2021	Market \$	\$5.25
Previous Crop	Soybeans		








Plot Top 3 (Yield)			
	Product	Trait	Dry Bu/Ac
1	H4052	VT2P	213.9
2	H4222	VT2P	208.2
3	H4144	SS	200.7

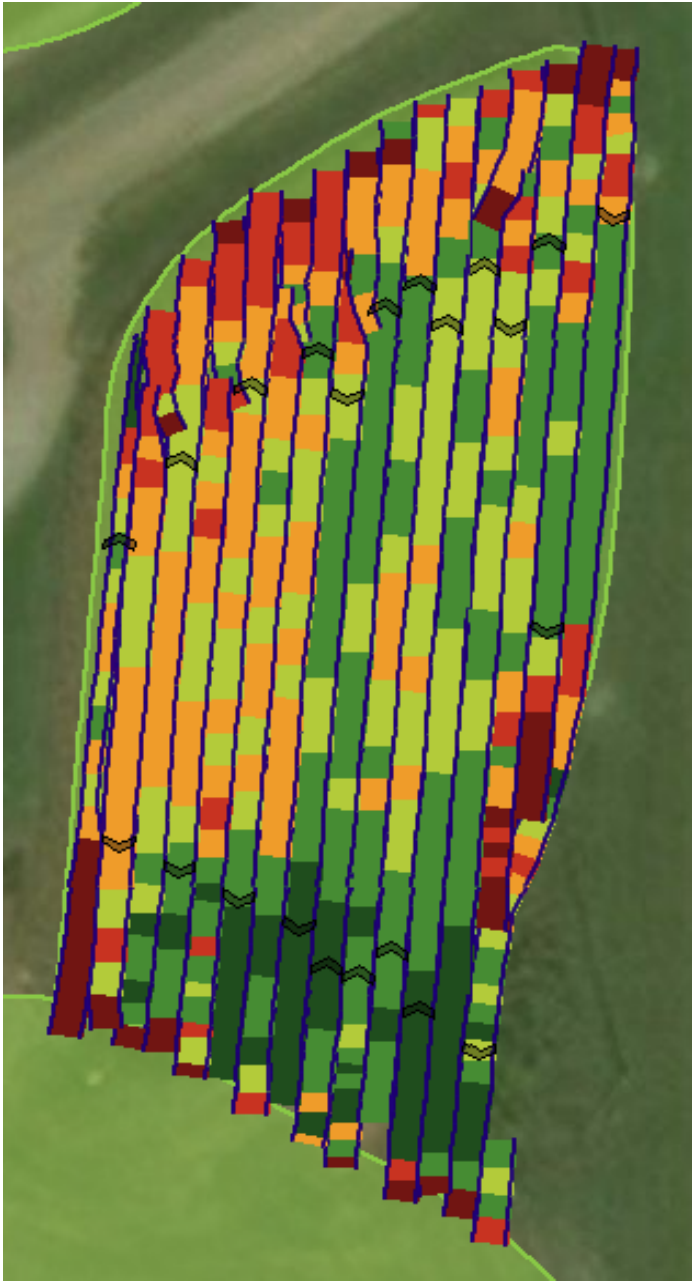
Plot Top 3 (Income)			
	Product	Trait	Net \$
1	H4052	VT2P	\$1,108.86
2	H4222	VT2P	\$1,080.56
3	H4144	SS	\$1,042.84

Notes:

Entry	Brand	Product	Trait	RM	Moisture	Wet Bu/Ac	Dry Bu/Ac	Yield Rank	Net \$	Net Rank
1	Hefty	H3712	VT2P	87	16.5	179.95	177.8	6	\$925.45	6
2	Hefty	H3922	VT2P	89	16.5	175.90	173.8	7	\$904.63	7
3	Hefty	HCEXP9052	VT2P	90	17.7	199.13	193.8	4	\$1,001.75	4
4	Hefty	H4052	VT2P	90	17.2	218.38	213.9	1	\$1,108.86	1
5	Hefty	H4144	SS	41	16.8	203.87	200.7	3	\$1,042.84	3
6	Hefty	H4222	VT2P	92	17.0	212.02	208.2	2	\$1,080.56	2
7	Hefty	HCEXP9244	SS	92	17.1	182.72	179.2	5	\$929.51	5



	H3712 VT2 PRO	0.151 ac
	H3922 VT2 Pro	0.126 ac
	H4052 VT2 PRO	0.149 ac
	H4144 SS	0.161 ac
	H4222 VT2Pro	0.171 ac
	HCEXP9052	0.138 ac
	HCEXP9244 SS	0.212 ac



243.8 - 373.0	0.103 ac
203.8 - 243.8	0.330 ac
183.9 - 203.8	0.264 ac
158.0 - 183.9	0.246 ac
117.2 - 158.0	0.100 ac
5.80 - 117.2	0.063 ac